



AVAILABLE
 IN MULTIPLE
 CONFIGURATIONS

BT8350

MODULAR FREESTANDING VIDEOWALL MOUNT

The BT8350 is a modular freestanding videowall mounting system. Available for use in both landscape and portrait configurations, the BT8350 can be used for installations up to 7 rows high and as many columns wide as desired. The modular design and captive, fast-fit connectors make assembly and disassembly of videowalls extremely quick and easy whilst the tool-less micro-adjustment allows screens to be perfectly aligned with ease.

SHOWN IN A 2X2
 CONFIGURATION



SPECIFICATION	
For screen sizes	46", 49" and 55"
Max load	50kg per screen
VESA® compatibility	200 x 200 up to 600 x 400

FEATURES

- Modular design allows quick and easy assembly and disassembly of videowalls - perfect for rental applications
- Order to your exact requirements, anything from 2x2 to 70x7
- Can be ordered for landscape or portrait screen mounting
- Tool-less micro-adjustments for seamless display alignment
- Captive, fast-fit nuts and screws make assembly and disassembly quick and easy
- Durable Epoxy powder coated frame is ideal for repeated assembly
- Safety screws help prevent unauthorised removal of screens
- Adjustable support bar provides added stability to videowall installations
- Floor spacers with cosmetic covers included for smart installation
- Base sections can face backwards if desired



SYSTEM X

**Landscape / portrait must be specified when ordering, a landscape kit can be used in portrait orientation with a few additional parts*

55" 140CM VESA 600 x 400 50KG PER SCREEN



Tool-less micro-adjustment for seamless display alignment



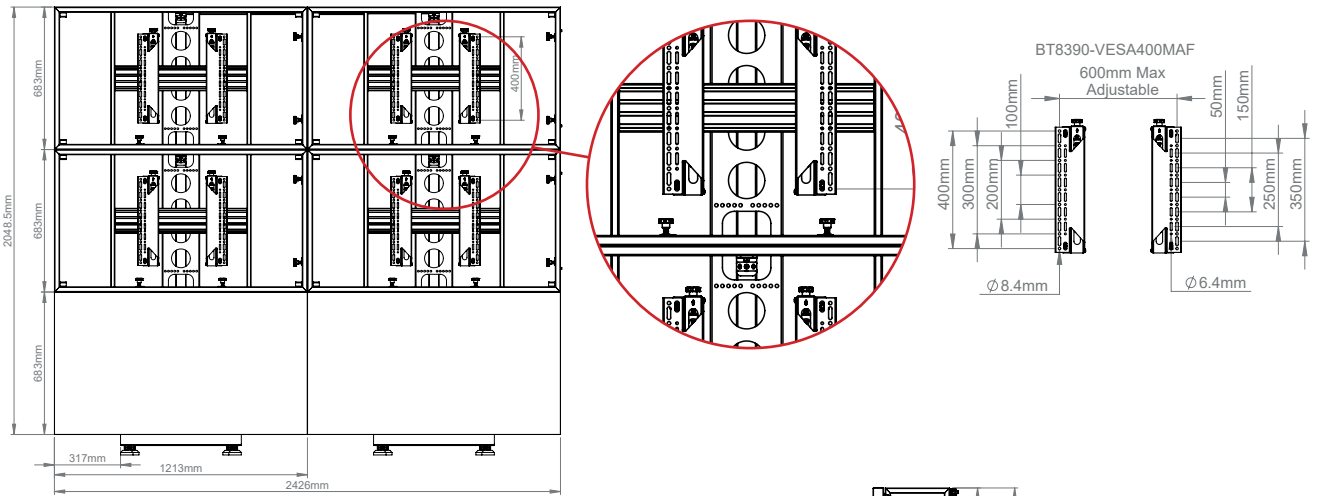
Cosmetic covers are included as standard



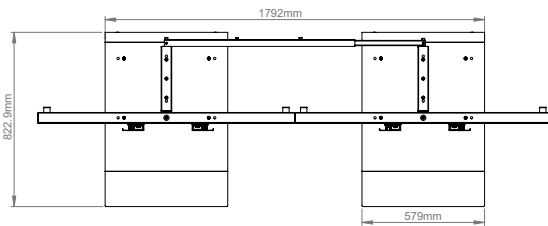
Captive fast-fit nuts and screws make assembly and disassembly quick and easy



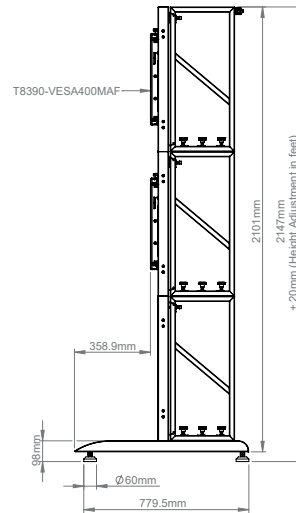
Modular design allows quick & easy assembly



FRONT VIEW



TOP VIEW



SIDE VIEW

NOTE: Ballast may be required. Refer to assembly leaflet

PACKING INFORMATION

PLEASE NOTE, THIS IS A **MULTI-BOX ITEM**

COLOUR:	ORDER REF:	EAN CODE:
Black	BT8350/B	5019318079832

*BT7564 Adapter will be supplied when the VESA pattern is 600. This will add 6mm to depth of interface arms
 Model shown is BT8350 55" version. 46" & 49" model dimensions will differ, apart from the depth, which will remain the same.

ORIGINAL DESIGNS BY B-TECH AV MOUNTS - REGISTERED DESIGNS & PATENTS APPLY

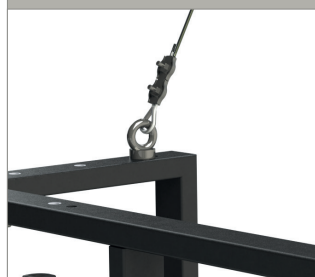
ACCESSORIES

BT8380-CASTORS



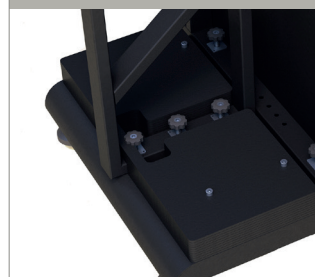
Braked Castors fit to the framework to create a mobile videowall solution

BT8350-EB



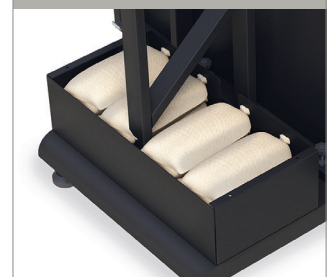
Eye Bolt allows the framework to be tied back to a wall

BT8350-WP



Stackable Ballast Plate can be used as weight for reversed base installations

BT8350-WB



Stackable Ballast Box can be used to hold your own ballast - e.g. sandbags

© 2016 B-Tech Professional Design & Manufacturing Ltd. All rights reserved.
 The information in this specification is for reference only. It is not intended to be used as a substitute for the manufacturer's instructions. B-Tech Professional Design & Manufacturing Ltd. is not responsible for any damage or injury caused by improper or unsafe use of the product. Any reproduction or modification of any part of this specification is strictly prohibited unless prior written permission has been granted by B-Tech Professional Design & Manufacturing Ltd. (B-Tech).

SS-V3.1-BT8350-161220