

BT8310XL

HEAVY DUTY POP-OUT FLAT SCREEN WALL MOUNT

Designed to mount extra-large screens, the heavy duty BT8310XL is capable of mounting screens up to 276lbs in both landscape and portrait orientations. With reinforced scissor arms, this wall mount is ideal for mounting the largest sized screens and features an easy to use pop-out function and 8-point micro-adjustment, making installation and alignment into a recessed wall both quick and simple. Access to the rear or sides of the screen for maintenance or cabling is possible through the pop-out feature, with an additional locking kit accessory available (separately) to prevent unauthorized access if required.

SPECIFICATIONS

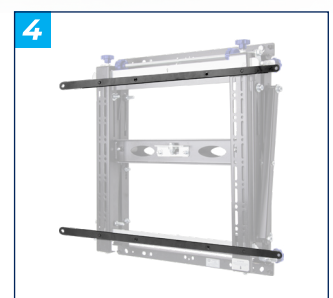
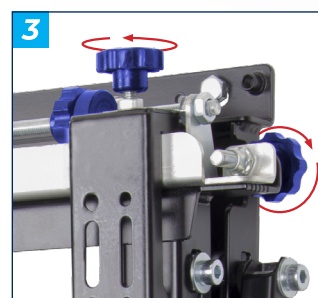
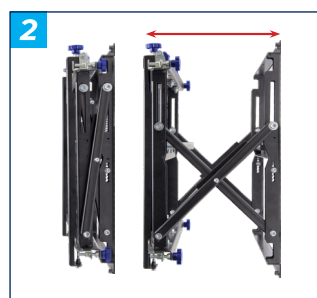
Recommended screen size	42" - 120"
Max load	154lbs - 276lbs
VESA® compatibility as standard	200 x 100 up to 400 x 400
VESA® compatibility with adaptors	up to 600 x 400
Flat to wall depth	3.97" (+/-0.2" with micro-adjustment)
Popped out depth	11.5" (+/-0.2" with micro-adjustment)

FEATURES

- Perfect for mounting large heavy duty screens into a recessed wall
- 1** Side arms are reinforced to hold heavy loads up to 276lbs
- 2** Push to open/push to close system provides quick and easy service access
- 3** Tool-less micro-adjustments at 8 points for seamless display alignment
- 4** Includes interface Adaptor Arms for VESA 600 x 400 as standard
- Suitable for landscape or portrait screen mounting
- Safety screws help prevent unauthorized removal of screens
- Suitable for both wall or pole mounting
- Integrated cable management
- BT8310-LK kit to prevent accidental pop-out of mount is also available
- All mounting hardware included

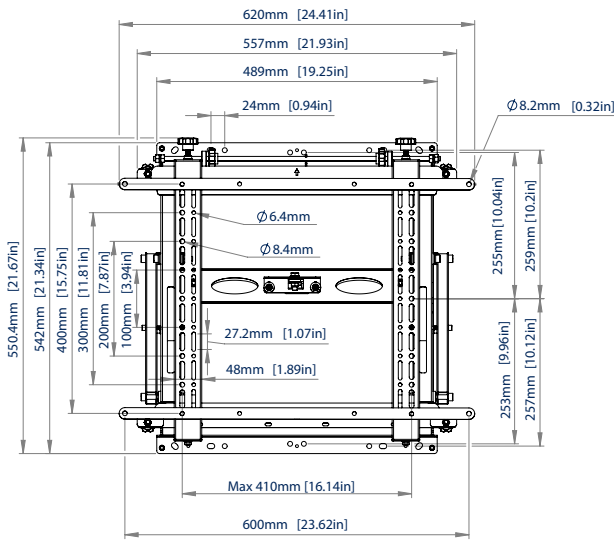


RECOMMENDED MAX SCREEN	MAX LOAD	MAX VESA	MICRO ADJUSTMENT	POST INSTALL ALIGNMENT	COLLAR COMPATIBLE	QR CODE
120" / 305cm	276lbs	600 x 400				

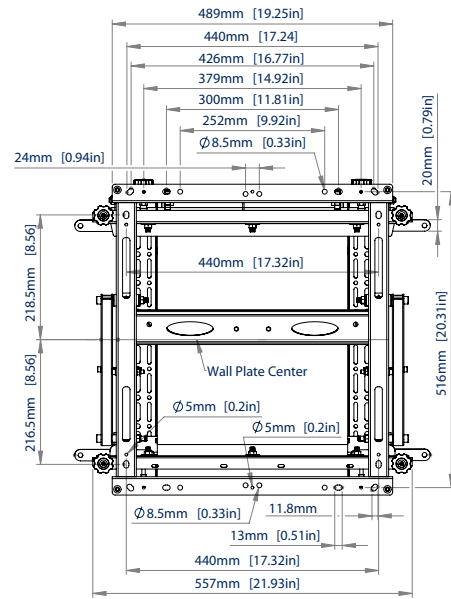


*Please note using the included Interface Adaptor Arms to mount VESA 600 x 400 screens will increase the total depth of the product by 0.2", for a total depth of 4.2", or 11.7" whilst popped out (+/-0.2" micro-adjustment).

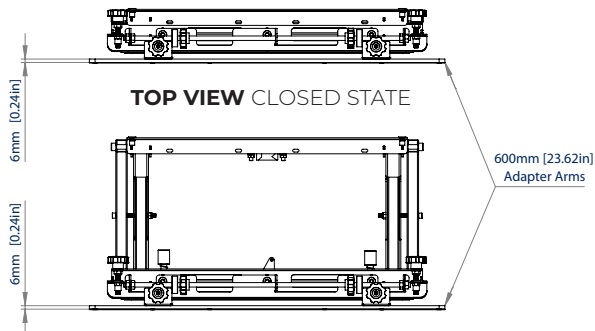
BT8310XL



FRONT VIEW

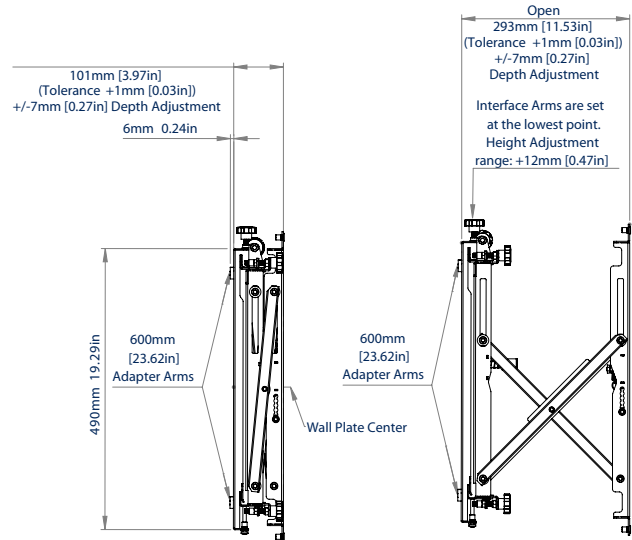


REAR VIEW



TOP VIEW CLOSED STATE

TOP VIEW OPEN STATE



SIDE VIEW CLOSED STATE

SIDE VIEW OPEN STATE

*Total depth increased to 4.2" (+/-0.2" micro-adjustment) when using VESA 600 x 400 adaptors
 **Total depth increased to 11.7" (+/-0.2" micro-adjustment) when using VESA 600 x 400 adaptors

ORDERING INFORMATION

COLOR	ORDER REF	UPC
Black	BT8310XL/B	811867032512

RELATED PRODUCTS

PRODUCT CODE	NAME	DESCRIPTION
BT8310-LK	Locking Kit for BT8310 & BT8310XL	Prevents unauthorized use of pop-out function
BT7565	Interface Adapter Arms	Additional Adapter arms for increased VESA fixings up to 900
BT8312	Pop-Out Videowall Mount	Modular pop-out mounting solution for creating multi-screen videowalls
BT8309	Pop-Out Flat Screen Wall Mount	Pop-out mounting solution for smaller screens up to 42"

© 2015 B-Tech, All Rights Reserved. The information and specifications are subject to change without notice. B-Tech AV Mounts Co. Ltd. is not responsible for any damage caused by improper installation or use. All other trademarks are the property of their respective owners. B-Tech AV Mounts Co. Ltd. is not responsible for any damage caused by improper installation or use. All other trademarks are the property of their respective owners.