



**B Tech**<sup>®</sup>  
AV Mounts

Project Case Study

**Curved dvLED Installation**

Coppell ISD Administration Building,  
Texas USA

## Project Details

- **Project Name:**  
Curved dvLED  
Boardroom Video Wall
- **End User:**  
Coppell Independent  
School District
- **Integrator**  
Data Projections Inc.
- **Mount Manufacturer:**  
B-Tech AV Mounts
- **Mounting Solution:**  
BT9343
- **Displays**  
Absen NX Series

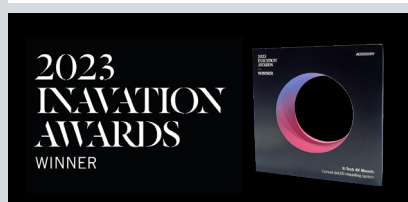


## The Challenge

Coppell ISD, an independent school district based in Texas, USA, wanted to update their existing AV systems in their boardroom at their administration building. Used for monthly board meetings, workshops and as a regular meeting space, the existing setup made use of a video projector used in conjunction with a motorized screen which would descend from the ceiling behind the board members at the dais. This was far from ideal as seating space for board members became limited as the flat display needed to sit off the curved wall by a significant distance. Additionally, the image on the display was not bright enough and the overhead lighting on the dais needed to be lowered to improve the image contrast, which led to shadows of seated board members to be cast on the display. A new solution was needed to correct these issues and make the space much more usable.

Renown for their reliable and experienced expertise in audio visual systems, Texas based AV integrator Data Projections were contacted to supply and install a modern solution that would allow the room to be used to its full potential.

*"It was really great working with the B-Tech design team. They were extremely accommodating, working with us on a couple of different renditions and in the end the solution we used was spot on."* - Data Projections' Vice President of Engineering and Technology, Jim Scalise

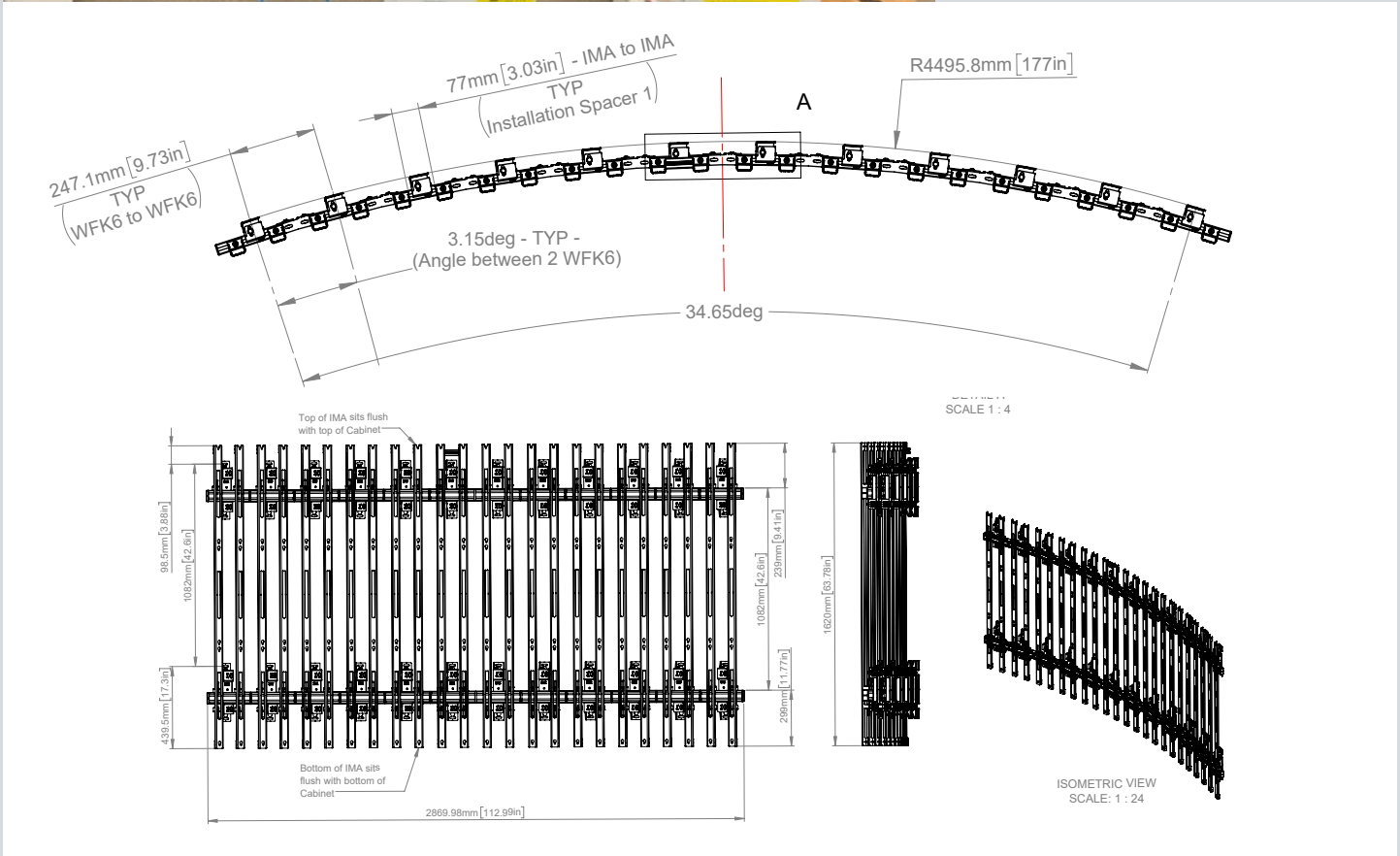




### The Solution

Data Projections' suggested solution for the project was to move away from a projection-based setup to a direct view LED video wall display. This was the obvious solution to improve brightness, visual clarity and to eliminate shadows cast from people seated at the dais in front of the projector.

Due to the curvature of the back wall, a flat dvLED display would continue to be an issue by limiting the available space in front of the display. So, Data Projections instead proposed installing a curved dvLED display that would follow the contour of the curved wall. To achieve this they would install Absen 2.5mm NX Series cabinets in a 12x3 configuration onto B-Tech's award-winning BT9343 curved dvLED mounting solution. In this case, the BT9343-ABS mounting kit was deployed as the solution that is designed to suit Absen cabinets specifically and was installed in 12 sections to follow the radius of the wall perfectly.



All parts used to assemble the curved mounting system structure are standard off-the-shelf B-Tech components, including the adjustable connector used to create the smooth curve. Technical drawings were provided by the B-Tech product design team to help the design and planning of the project and the installer doing the onsite-assembly.

## The Result

The resulting curved dvLED videowall solved all the issues of the original setup, the board members no longer have a projector pointed at them, the room lights no longer need to be dimmed and the space behind chairs is vastly improved, with the protrusion of the wall being just 5" rather than the previous 12" - making the entire dias usable. The display is much brighter with more vivid content, resulting in a much-improved viewing experience.

Data Projections Vice President of Engineering and Technology Jim Scalise commented *"It was really great working with the B-Tech design team. They were extremely accommodating, working with us on a couple of different renditions and in the end the solution we used was spot on."*



**"B-Tech's curved mounting system was a joy to work with and the support from their team throughout was second to none"** - Dannie Dement, Data Projections Project Manager



## Project Roll of Honors

**Data Projections Inc.**  
Account Executive: **Loretta Padilla**  
Designers: **Jim Scalise/Brent Wilkerson**  
Project Manager: **Dannie Dement**  
Programmer: **Tony Orosco**  
Commissioner: **Andrew Gaikema**

**B-Tech AV Mounts**  
Account Manager: **Joan Iem**  
Design Engineer: **Hieu Vu**  
Technical Support Engineer: **Scott Waldron**  
dvLED Coordinador: **Michael Ilindra Bull**